

# FOTRIC 320F Series

Compact handheld thermal imaging cameras

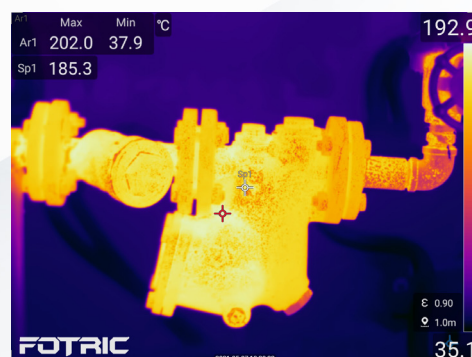
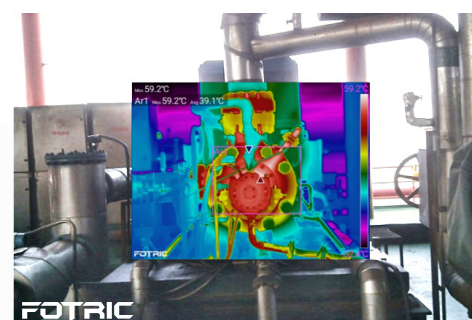
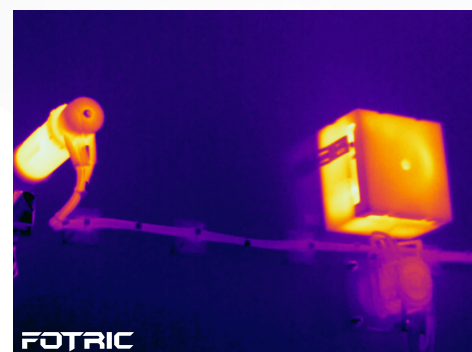


Ready-to-Go  
All-Purpose  
Inspection Tool

All-Purpose | Price-wise | Reliable

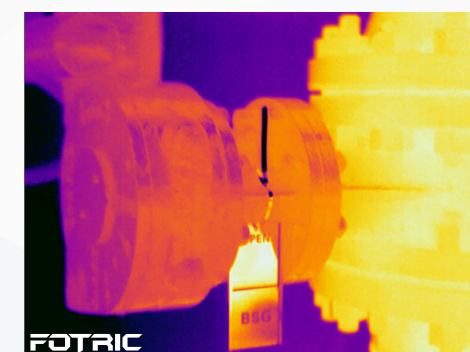
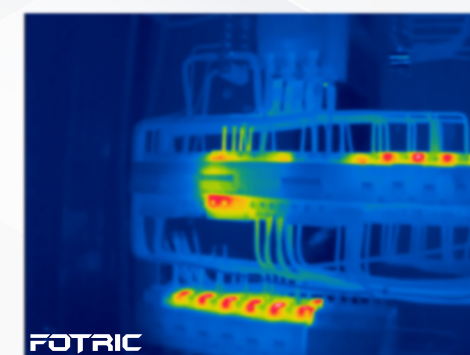
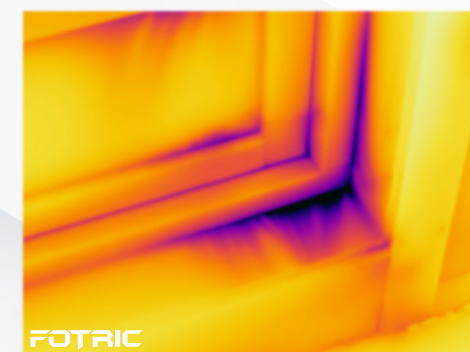
# Ready-To-Go All-purpose, All-budgets

- Detect Mechanical, Electrical and Building hidden thermal abnormalities with enhanced images.
- Measure temperatures from -20 to 550°C with automatic range adjustment.
- Reveal low visibility details with LED flash lamp and Laser pointer.
- Aim and shoot large scenes with wide-angle lens.



# Easy Inspections

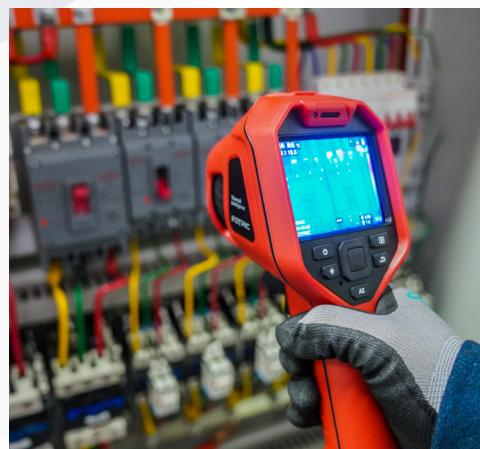
- Always in Focus  
Focus-free thermal and digital camera, suitable working distance as close as 0.5m.
- Easy Operation  
Highly-responsive 3.5" touch-screen and fast user interface for a smoother experience.
- Compact and light  
Its weight and size fit as one more tool in the box or overall pocket.





# Convenient and Compatible

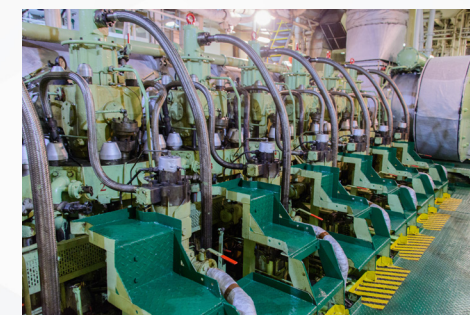
- Hands-free annotations
  - Record voice-notes and listen to alarms via a Bluetooth headset.
  - Tag images with equipment name using QR-Code scanner.



- Easy Sharing
  - Transfer images in seconds via Wi-Fi or Memory Card (64GB).
  - View thermal photos and videos in almost any device (JPEG & MPEG4 formats).
  - One-click automatic reports via FOTRIC AnalyzIR software.

# Reliable from The Inside-out

- Dust and water resistant (IP54), 2 meters drop designed. Highly durable against common field environments.
- Lifetime Free camera software upgrades to meet global users' s needs.



- FOTRIC is committed to deliver state-of-art products with world-class components and unique software.

# Specifications

Core parameters	FOTRIC 326F	FOTRIC 325F	FOTRIC 323F	FOTRIC 322F	FOTRIC 321F
Thermal Resolution	384*288	320*240	264*198	160*120	128*96
Super Resolution(SR)	768*576	640*480	528*396	320*240	256*192
Thermal Sensitivity (NETD)	40mk(0.04℃)	40mk(0.04℃)	40mk(0.04℃)	60mk(0.06℃)	60mk(0.06℃)
Lens Options(Not interchangeable)	49°x 36.8°	49°x 36.8°	49°x 36.8°	46.5°x 35°	46.5°x 35°
IFOV (spatial resolution)	2.78 mrad	2.78 mrad	3.40 mrad	5.15 mrad	6.44 mrad
Focal length	f 7.5	f 7.5	f 7.5	f 3.3	f 3.3
Minimum Focus Distance	0.5m	0.5m	0.5m	0.5m	0.5m
Focus Mode	0.5 meters focus free				
Frame Rate	30Hz				
AI programmable key	Support				
Wi-Fi & Bluetooth	Support				
Wi-Fi FTP Transfer	Transfer imaging data to computer, by Wi-Fi FTP protocol				
Geographic Location	Support, GPS				
Thermal and visible light Image fusion	Support, transparency 0% ~100%				
Picture in Picture	Support, resizable and adjustable				
TWB Non-linear thermal color display	Support				
Build-in digital camera	8 MP industrial camera				
LED flash lamp	Support				
Temperature Analysis					
Temperature Range	-20℃ ~ 120℃, 0℃ ~ 550℃				
Intelligent Range Auto-fit	Support				
Measurement Tools	Spot:6; Line:1; Rectangle/Circle:4			Spot:4; Line:1; Rectangle/Circle:4	
Measurement Accuracy	±2℃ or 2% , whichever is greater (at 25℃ ambient temperature)				
Emissivity	Support				
Ambient Temp	Support				
Reflected Temp	N/A				
Relative Humidity	Support				
Measurement Distance	Support				
IR Window Compensation	N/A				
Temperature Rise & Difference	N/A				
ROI Sound Alarm	Support, via Speaker or Bluetooth headset				
ROI Partial Emissivity	N/A				
Image Display					
Display Screen	3.5 inch Touch Screen				
Image Mode	Thermal, Visible light, Picture in Picture & Image Fusion				
Palettes	8, Grey, Iron, Rainbow, Grey-red, Rain, GlowBow, Medical, Prism				
Inverted Palettes	N/A				
Isotherm/Color Alarms	Support, (Above, Below, and in-between)				
Auto Scale	Support				
Manual Scale	Support				
Touch Scale	Support				
Minimum Temperature Span	Auto:3℃ , Manual:2℃				

Storage & Analysis	FOTRIC 326F	FOTRIC 325F	FOTRIC 323F	FOTRIC 322F	FOTRIC 321F
Storage Card	TF card, 64GB				
Capture Mode	Single frame capture and Time-lapse				
Video Recording	Radiometric thermal video(IRS.) and MP4 video recording				
File Format	Radiometric thermal photo(JPEG.), visible light photo, Radiometric video(IRS.) and MP4 video				
On screen Analysis	Support				
Voice Annotation	Support, record up to 120 seconds; via Mic or Bluetooth headset				
Text Annotation	Support				
Tags	Support, Manual input and QR-code scan				
Favorite	Support				
PC analysis and Report Software	Fotric AnalyzIR software, FREE				
Remote Display&Analysis	Support				
Power System					
Battery	3.6V, 5000mAh Li-battery				
Battery operation time	≥4 hours			≥5 hours	
Battery charging time	3.5 hours to full-charge by battery dock. 3 hours to full-charge by connecting to camera.				
Charging methods	Support battery dock adaptor or Type-C interface on camera.				
Power supply	Support Type-C interface charging method, from power adaptor or computer.				
Auto screen-off	Support				
General Specifications					
Spectral range	7-14μm				
IR Detector type	uncooled FPA infrared detector				
Detector Pitch	17μm				
Digital Zoom	1-8 times, continuous				
Wi-Fi Connection	Support 2.4GHz&5GH channel, Support 802.11a/b/g/n/ac				
Bluetooth Connection	BT4.2 LE, Support connect to Bluetooth headset				
USB Interface	USB Type-C type; USB 3.0 / 2.0 compliant, Support USB OTG				
HDMI Interface	Micro HDMI type, HDMI 1.4 compliant, Support 1080P imaging video streaming in 60Hz.				
Storage Card Interface	TF Card, Support Hot-plug.				
Laser pointer	Level2; wavelength: 635nm; Power: <1mW				
Operation temperature	-20°C to 50°C				
Storage temperature	-40°C to 70°C, without battery				
Humidity	<95%RH				
Safety	SELV relay (GB 4943.1/IEC60950-1)				
Electromagnetic Compatibility	GB/T17626.2/IEC 61000-4-2				
Vibration	2g(GB/T 2423.10/IEC 60068-2-6)				
Shock	25g(GB/T 2423.5/IEC 60068-2-27)				
Collision	10g(GB/T 2423.6/IEC 60068-2-29) with packing				
Drop	Designed for 2 meters drop test. (GB/T 2423.8/IEC 60068-2-32)				
Dimension	243mm*95mm*142mm				
Weight (include battery)	730g				
Enclosure rating	IP54				
Tripod interface	UNC 1/4 -20 threaded hole for tripod				
Warranty	2 years warranty on camera, 10 years for IR detector.				
Recommended calibration cycle	2 years				
Supported languages	English, Spanish, Korean, Traditional Chinese				
RoHS compliant	Yes				
Box Contents	FOTRIC 320 handheld thermal camera, Documentations( certificate of inspection, certificate of calibration, warranty card, packing list), Quick-start user manual, USB-Type C cable, Micro-HDMI cable, TF card ,TF card reader, Power adaptor, Battery charger dock, 2 pieces of batteries.				

# Innovation Excellence Integrity

Equipment described herein may require EU, US and UNSC authorization for export purposes.

Imagery for illustration purposes only.

Specifications are subject to change without notice.

FOTRIC INC. All Rights reserved.

## Contact FOTRIC

### TOP TECHNIKA POLSKA



**mgr inż. Paweł Surmiak**

tel. +48 508 051 377

[biuro@toptechnikapolska.pl](mailto:biuro@toptechnikapolska.pl)

Biuro: ul. Przanowskiego 83, 01-457 Warszawa

[www.toptechnikapolska.pl](http://www.toptechnikapolska.pl)

Follow us in



**FOTRIC**  
— Thermal Intelligence —